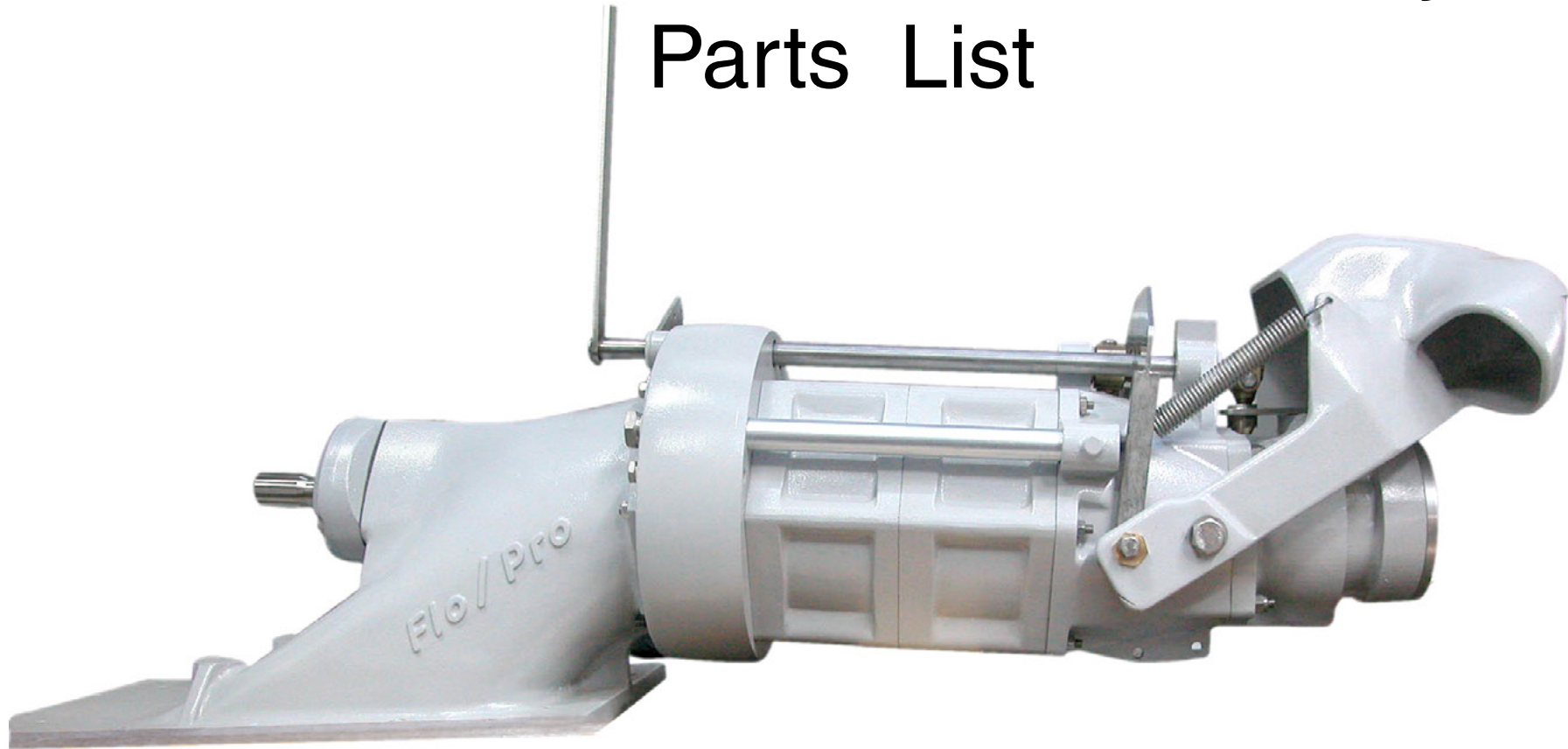


Flo Pro Fresh Water Series Waterjets

Parts List



WARNING NOTICE
OPERATOR MUST READ AND FAMILIARISE THEMSELVES
WITH OWNERS MANUAL PRIOR TO OPERATING:

ALL INSTRUCTIONS MUST BE COMPLIED
WITH OTHERWISE WARRANTY & LIABILITY
WILL BE NULL AND VOID



Flo Pro Marine Ltd
PO Box 11145
Christchurch, 8443
New Zealand

Telephone: +64 278 958000
Email: info@flopromarine.com
www.flopromarine.com

August 2013

Flo Pro 195 Fresh Water Series Waterjets

Models: 195-2, 195-3



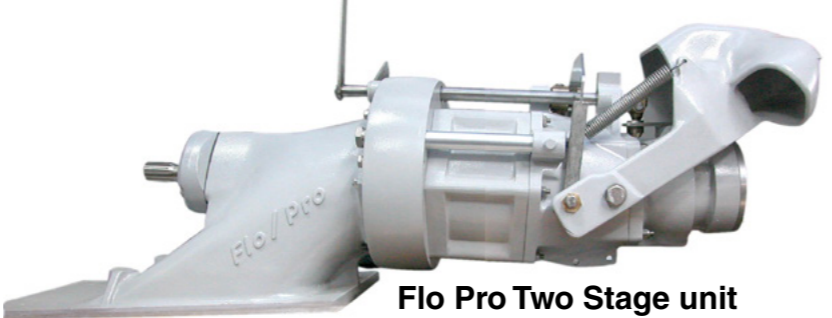


Flo Pro Fresh Water Series Waterjets are well engineered high quality jet units. Flo Pro products will interchange with 770 series Hamilton and Kodiak pumps.

- Features:**
- Bissalloy intake grill
 - Stronger intake housing
 - No inspection hatch (better flow)
 - Removeable intake impellor housing
 - No exposed stator studs (stronger housing)
 - Stainless stator vain indserts (removeable)
 - Stainless impellers (2205)
 - Posi/nozzles two sizes with removeable inserts
 - Split duct style reverse bucket
 - Oil bath front bearing housing



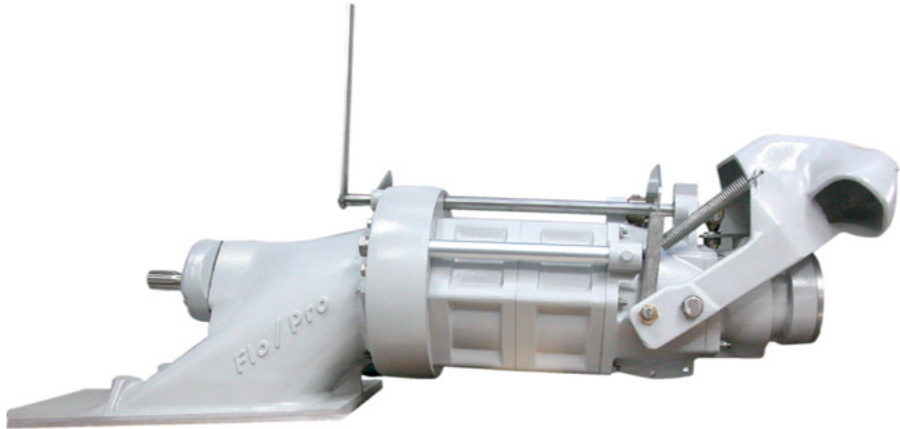
Posi/nozzles two sizes with removeable inserts **Split duct style reverse bucket**



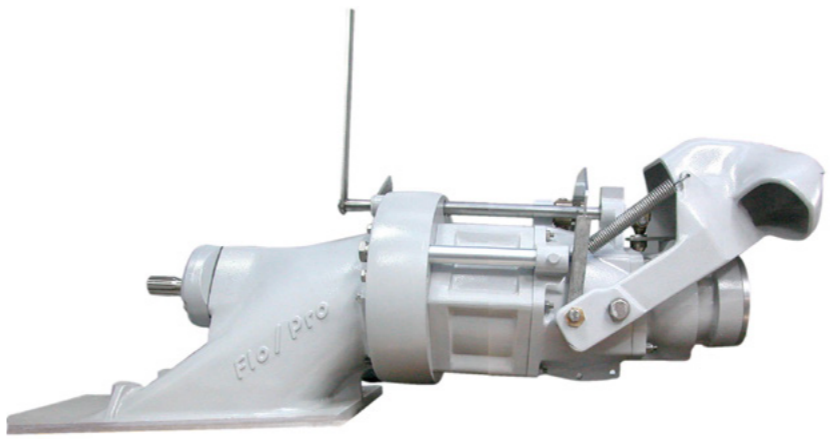
Flo Pro Two Stage unit



Flo Pro three Stage unit



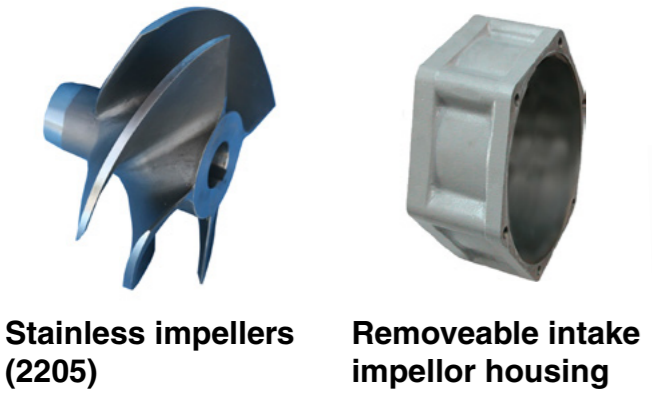
Flo Pro Marine Freshwater Waterjets Three Stage (195/3)



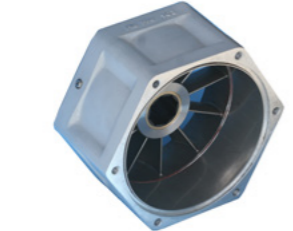
Flo Pro Marine Freshwater Waterjets Two Stage (195/2)

PARTS LIST

Item	Description	Part #	Qty	Qty
87	Three stage unit (complete)	1087		2 stage 3stage
86	Two stage unit (complete)	1086	1	1
90	Packaging pallet (certified)	1090	1	1
91	jet unit carboard container for transport	1091	1	1



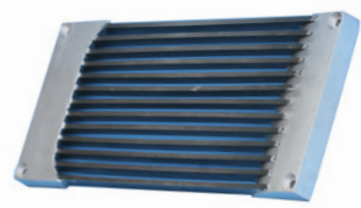
Stainless impellers (2205) **Removeable intake impellor housing**



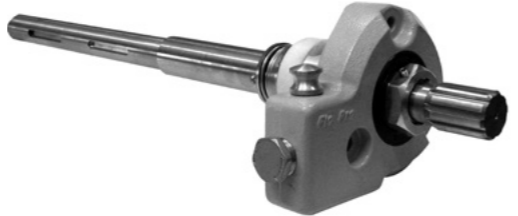
Stator



Stainless stator vain inserts (removeable)

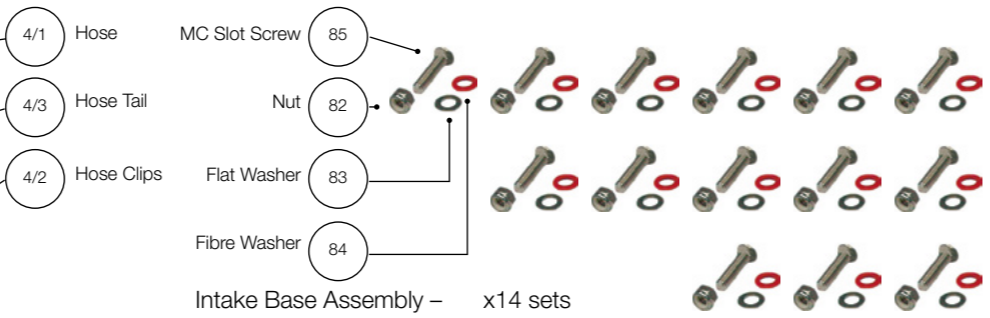
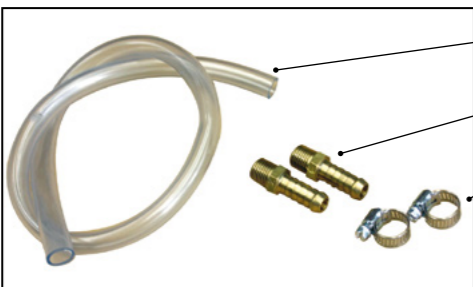
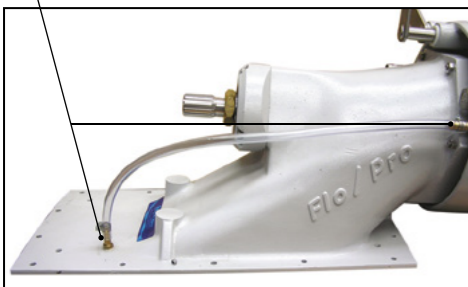
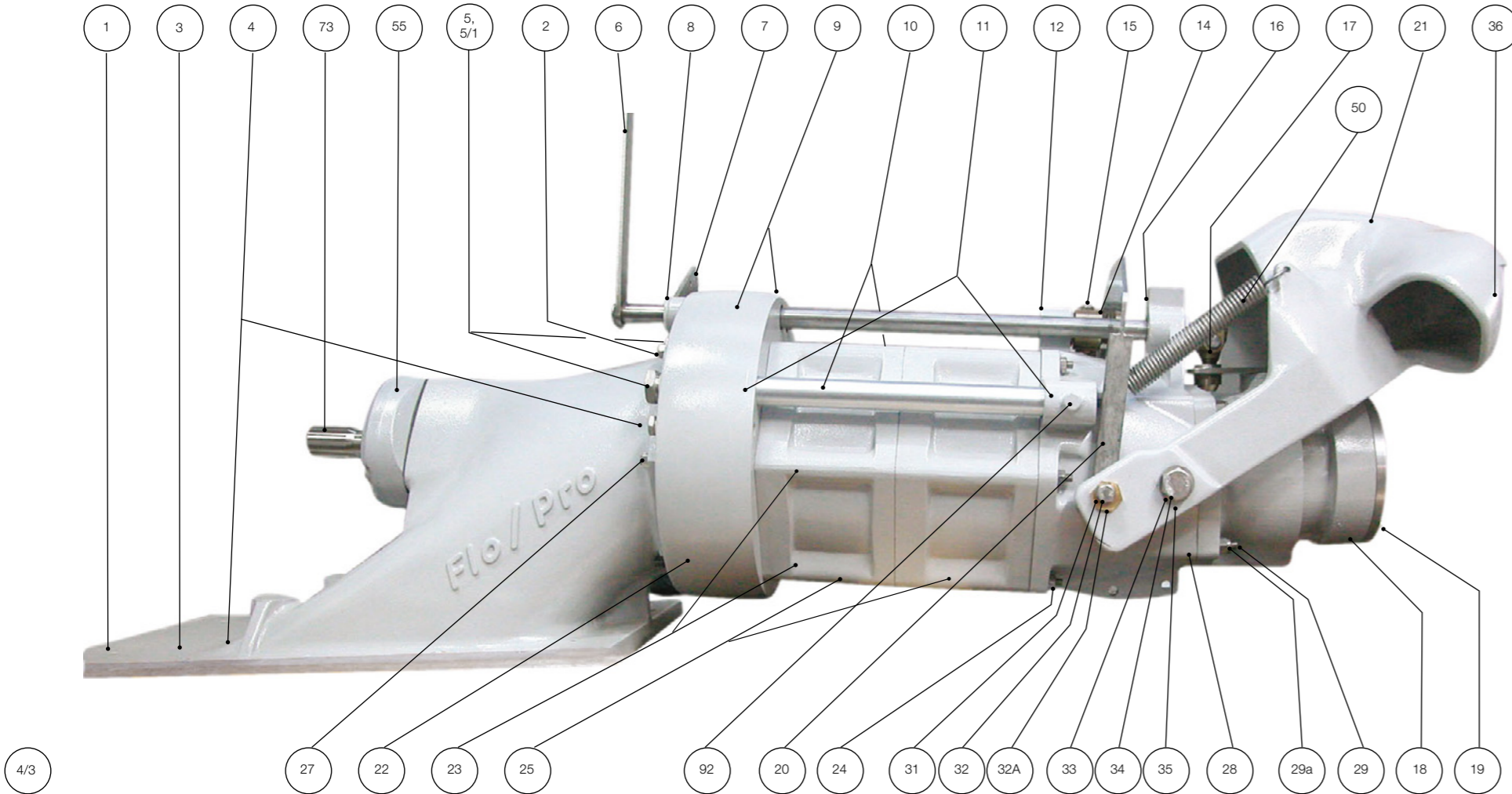


Bissalloy intake grill



Oil bath front bearing housing on splined shaft

Flo/Pro Marine Freshwater Jet Parts List



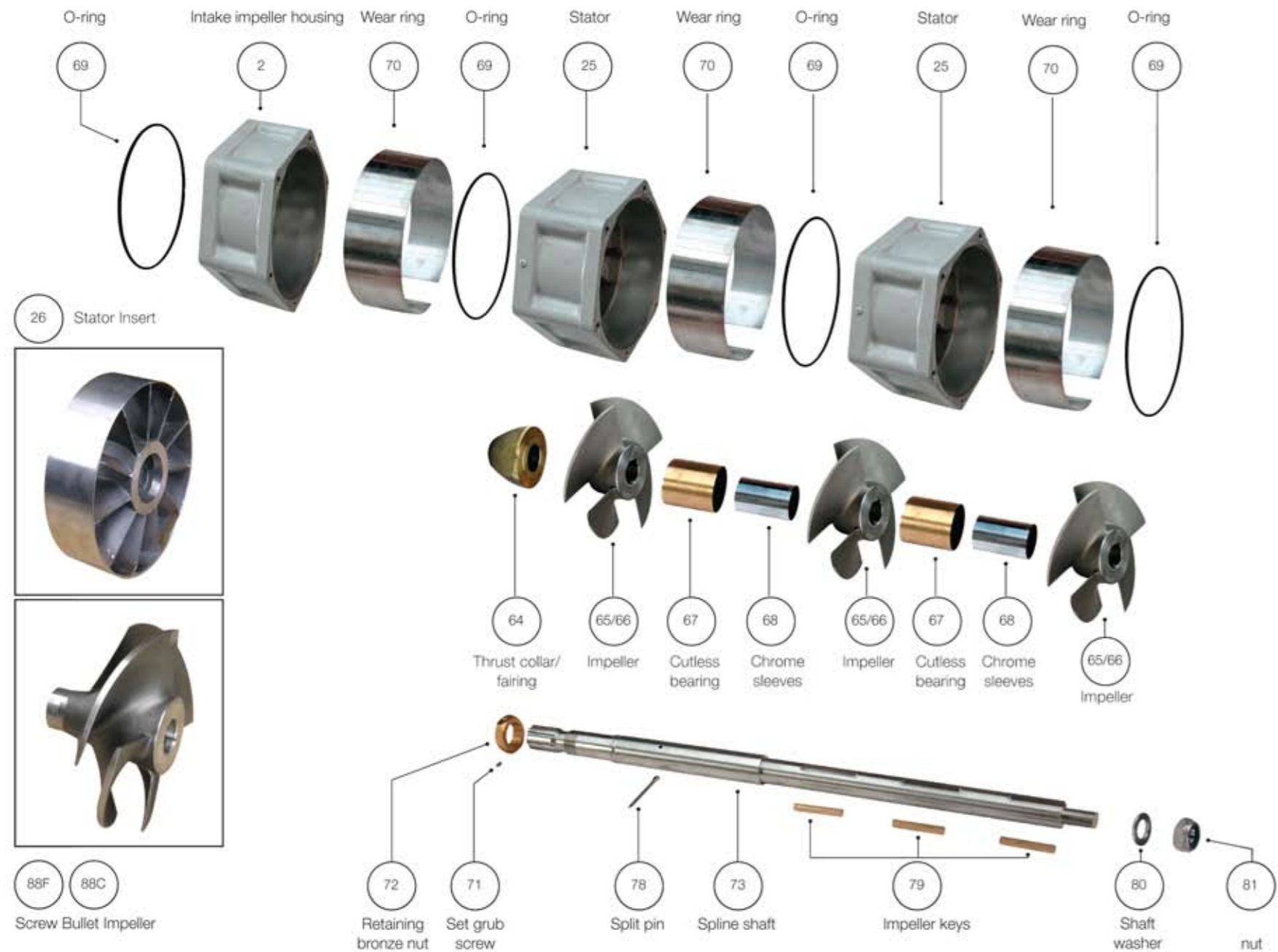
PARTS PRICE LIST

Flo Pro Marine Freshwater Waterjets
Two Stage (195/2) Three Stage (195/3)

Item	Description	Part #	Qty	Qty	unit
			2 stage	3stage	
1	Intake Housing (complete)	1001	1	1	
2	Intake Impeller Housing	1002	1	2	
3	Serial No & Label	1003	1	1	
4	Air Bleed	1004			
4/1	Air Bleed Hose 3/8	1004/1	1	1	
4/2	Air Bleed Hose Clips	1004/2	2	2	each
4/3	Air Bleed Hose Tails 3/8 BSP	1004/3	2	2	each
5	Water Take-off Hose Tail 3/4 x 3/4 BSP (316)	1005	1	1	
5/1	Water Take-off Hex Plug 3/4 BSP (316)	1005/1	1	1	
6	Steering Shaft	1006/2	1		
6	Steering Shaft	1006/3		1	
7	Reverse Shaft	1007/2	1		
7	Reverse Shaft	1007/3	1		
8	Steering Shaft Bush 1 1/2 x 3/4	1008	1	1	
8	Reverse Shaft Bush 1 1/2 x 3/4	1008	1	1	
9	Steering Shaft O-Ring	1009	1	1	
9	Reverse Shaft O-Ring	1009	1	1	
10	Water Delivery Tubes	1010/2	2		each
10	Water Delivery Tubes	1010/3	2		
11	Water Delivery Tube O-Rings	1011	4	4	each
12	Tailpipe Reverse Bush 1 1/2 x 3/4	1012	1	1	
14	Reverse Crank	1014	1	1	
15	Cotter Pin Assembly (reverse crank)	1015	1	1	each
15A	Cotter Pin Assembly (steering crank drilled)	1015/A	1	1	each
16	Tailpipe Steering Bush 1 1/2 x 3/4	1016	1	1	
17	Steering Crank	1017	1	1	
18	Steering Nozzle (complete mkl)	1018MKI	1	1	
19	Steering Nozzle Insert mkl	1019MKI	1	1	
18	Steering Nozzle (complete mkII)	1018MKII	1	1	
19	Steering Nozzle Insert mkII	1019MKII	1	1	
20	Reverse Yoke (316)	1020	1	1	
21	Reverse Bucket	1021	1	1	
22	Transom Housing Seal	1022	1	1	

Item	Description	Part #	Qty	Qty	unit
			2 stage	3stage	
23	Studs – Intake / Tailpipe	1023/2	6		each
23	Studs – Intake / Tailpipe	1023/3		6	each
24	Hex Nuts 5/16 UNC (316)	1024	6	6	each
25	Stator	1025/2	1		
25	Stator	1025/3	2		each
26	stator insert	1026	1		
27	Hex Nuts 5/16 UNC (316)	1027	4	4	each
28	Tailpipe	1028/2	1		
28	Tailpipe	1028/3		1	
29	Studs – Tailpipe / Nozzle 3/8 UNC	1029	4	4	each
29A	Nuts (Nyloc) 3/8 UNC (316)	1029A	4	4	each
30	Anode (Accessory)	1030	1	1	
31	Reverse Yoke Eccentric Bush	1031	2	2	each
32	Reverse Yoke Eccentric Hex Set Screw Bolt 3/8 x 1 1/4 UNC (316)	1032	2	2	each
32A	Reverse Yoke Eccentric 3/8 Spring Washer (316)	1032A	2	2	each
33	Reverse Bucket Pivot Sleeve	1033	2	2	each
34	Reverse Bucket Hex Set Screw Bolt 5/8 x 1 3/4 UNC (316)	1034	2	2	each
35	Reverse Bucket Flat Washer 5/8 (316 16g)	1035	4	4	each
36	Flo Pro Label	1036	2	2	each
50	Reverse Bucket Spring	1050	2	2	each
	Intake Base Assembly				
82	Hex Nut 5/16 UNC (316)	1082	14	14	each
83	Flat Washer 5/16 (316)	1083	14	14	each
84	Fibre Washer 5/16 x 1/16	1084	14	14	each
85	Counter Sunk Machine Slot Screw 5/16 x 2 1/2 UNC (316)	1085	14	14	each
92	Water Delivery Hex Plug 1/8 BSP	1092	2	2	each

Flo/Pro Marine Freshwater Jet Pumps – Parts List



PARTS PRICE LIST

Flo Pro Marine Freshwater Waterjets
Main Shaft, Stator Assemblies & Impellers

Item	Description	Part #	Qty	Qty	
			2 stage	3stage	unit
2	Intake Impeller Housing	1002	1	1	
25	Stator (complete)	1025	1	2 each	
64	Thrust Collar Fairing	1064	1	1	
65	Impeller (Fine pitch)	1065	2	3 each	
66	Impeller (Coarse pitch)	1066	2	3 each	
67	Cutless Bearing (2" x 1 1/2" x 6")	1067	2	2 each	
68	Chrome Sleeve (1 1/4" x 1 1/2" x 2")	1068	2	2 each	
69	O-Ring Stator	1069	3	4 each	
70	Wear Ring	1070	2	3 each	
71	Set / Grub Screw	1071	1	1	
72	Retaining Locking Nut (Bronze) 75ftlbs	1072	1	1	
73	Spline Shaft	1073/2	1		
73	Spline Shaft	1073/3		1	
78	Split Pin 3/16 x 2"	1078	1	1	
79	Impeller Keys (Brass) 5/16 x 2 3/8	1079	2	3 each	
80	Shaft Washer (flat) 35 x 21 x 4	1080	1	1	
81	Spline Shaft Nut M20 75ftlbs	1081	1	1	
81A	Spline Shaft AB Nut M20 75ftlbs	1081A	1	1	

Accessories

88C	Screw Style Bullet Impeller (Coarse pitch)	1088C	1	1	
88F	Screw Style Bullet Impeller (Fine pitch)	1088F	1	1	
26	Stator Insert (Accessories)	1026	1	2 each	
30	Anode (Accessory)	1030	1	1	
93	Sand Trap Bare	1093			
94	Sand Trap Complete	1094			
95	label warning notice	1095	1	1	



Sand Trap Complete

94

WARNING NOTICE

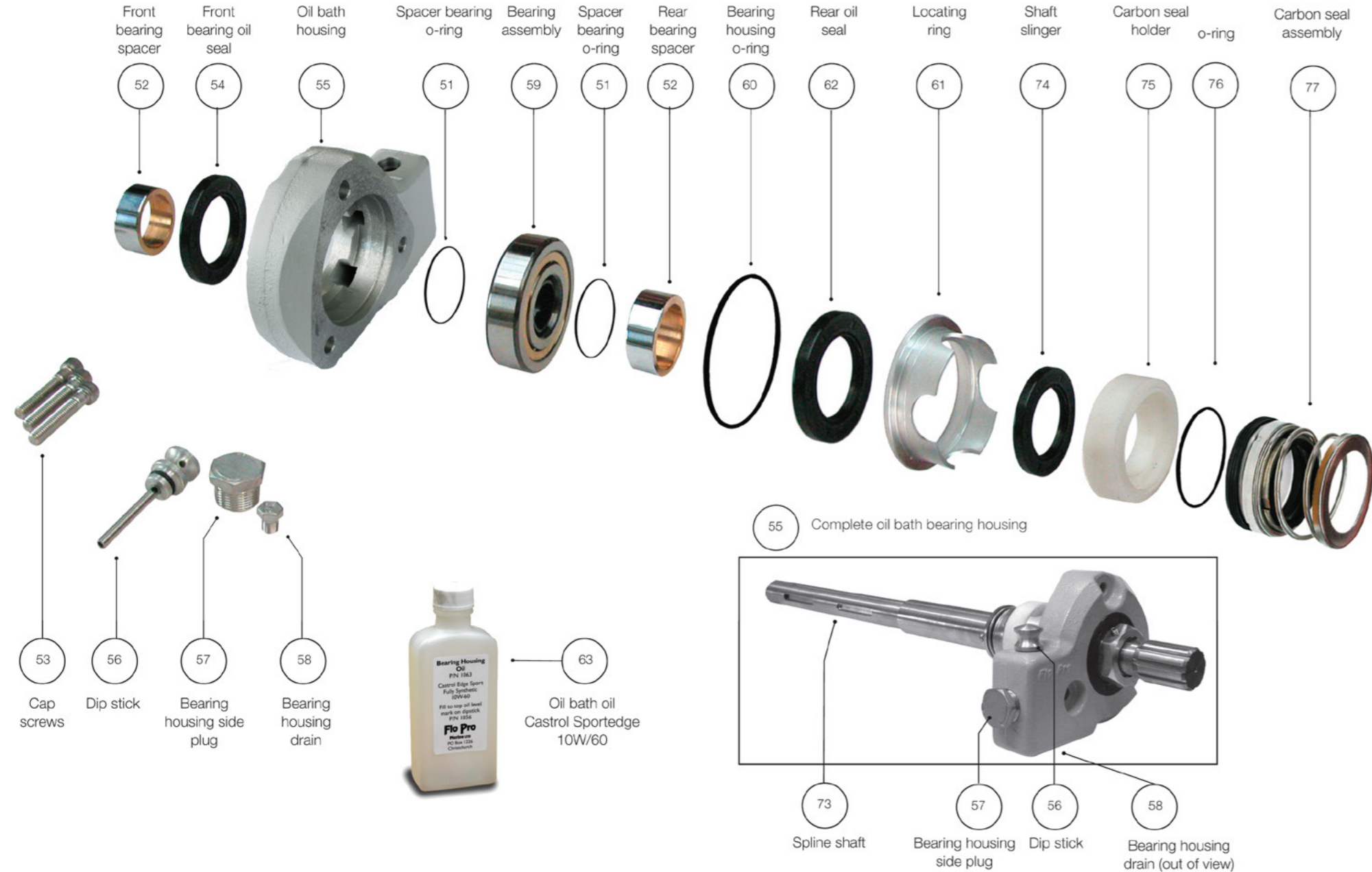
OPERATOR MUST READ AND FAMILIARISE THEMSELVES WITH OWNERS MANUAL PRIOR TO OPERATING:

ALL INSTRUCTIONS MUST BE COMPLIED WITH OTHERWISE WARRANTY & LIABILITY WILL BE NULL AND VOID



95 label warning notice

Flo/Pro Marine Freshwater Jet Pumps – Oil Bath Bearing Housing Assembly Parts List

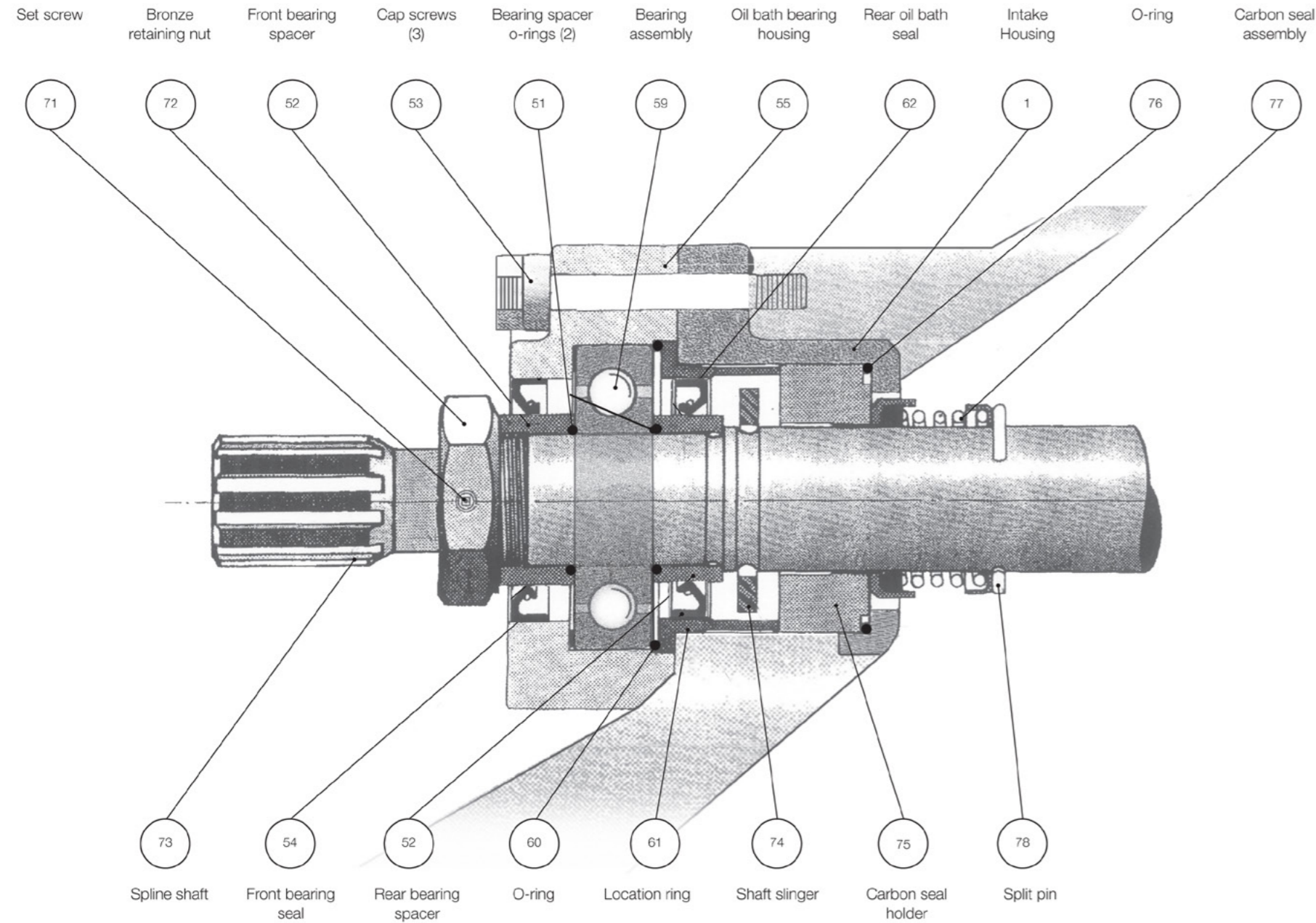


PARTS PRICE LIST

**Flo Pro Marine Freshwater Waterjets
Oil Bath Bearing Housing Assembly**

Item	Description	Part #	Qty	Qty
				2 stage 3stage unit
51	Bearing Spacer O-Rings	1051	2	2 each
52	Bearing Spacer Front & Rear (1 3/8" x 1 3/4 x 3/4")	1052	2	2 each
53	Hex Socket Cap Screw 21/4 x 3/8 UNC (316)	1053	3	3 each
54	Front Bearing Seal	1054	1	1
55	Oil Bath Housing (bare)	1055	1	1
55/1	Oil Bath Housing (complete)	1055/1	1	1
56	Oil Bath Housing Dipstick	1056	1	1
57	Bearing Housing Side Hex Plug, 3/4 x 150 BSP (316)	1057	1	1
58	Bearing Housing Oil Drain Hex Plug 1/8 BSP (316)	1058	1	1
59	Bearing QJ 307	1059	1	1
60	Bearing Housing O-Ring	1060	1	1
61	Locating Ring	1061	1	1
62	Rear Oil Seal	1062	1	1
63	Castrol Sport Edge Oil 10W 60	1063	1	1
73	Spline Shaft	1073/2	1	
73	Spline Shaft	1073/3		1
74	Shaft Slinger	1074	1	1
75	Carbon Seal Holder	1075	1	1
76	Intake housing o-ring	1076	1	1
77	Carbon Mechanical Seal Assembly (MS150HG)	1077	1	1
78	Split pin 3/16 x 2" s/s	1078	1	1

Flo/Pro Marine Freshwater Jet Pumps – Spline Shaft and Bearing Housing Assembly



PARTS PRICE LIST

Flo Pro Marine Freshwater Waterjet Models 195/2 & 195/3 Spline Shaft and Bearing Housing Assembly

Item	Description	Part #	Qty
1	Intake	1001	1
51	Bearing Spacer O-Rings	1051	2
52	Bearing Spacer Front & Rear (1 3/8" x 1 3/4 x 3/4")	1052	2
53	Capscrew Hex Socket 2 1/2 x 3/8 (316)	1053	3
54	Front Bearing Seal	1054	1
55	Oil Bath Housing (bare)	1055	1
55/1	Oil Bath Housing (complete)	1055/1	1
59	Bearing QJ 307	1059	1
60	Bearing Housing O-Ring	1060	1
61	Locating Ring	1061	1
62	Rear Oil Seal	1062	1
71	Cap Screw, 1/4 x 20 x 5/16	1071	1
72	Bronze Spline Retaining Nut	1072	1
73	Spline Shaft 2 stage	1073/2	1
73	Spline Shaft 3 stage	1073/3	1
74	Shaft Slinger	1074	1
75	Carbon Seal Holder	1075	1
76	Intake housing o/ring	1076	1
77	Mechanical Seal Assembly (MS150HG)	1077	1
78	Split Pin 3/16 x 2" (316)	1078	1

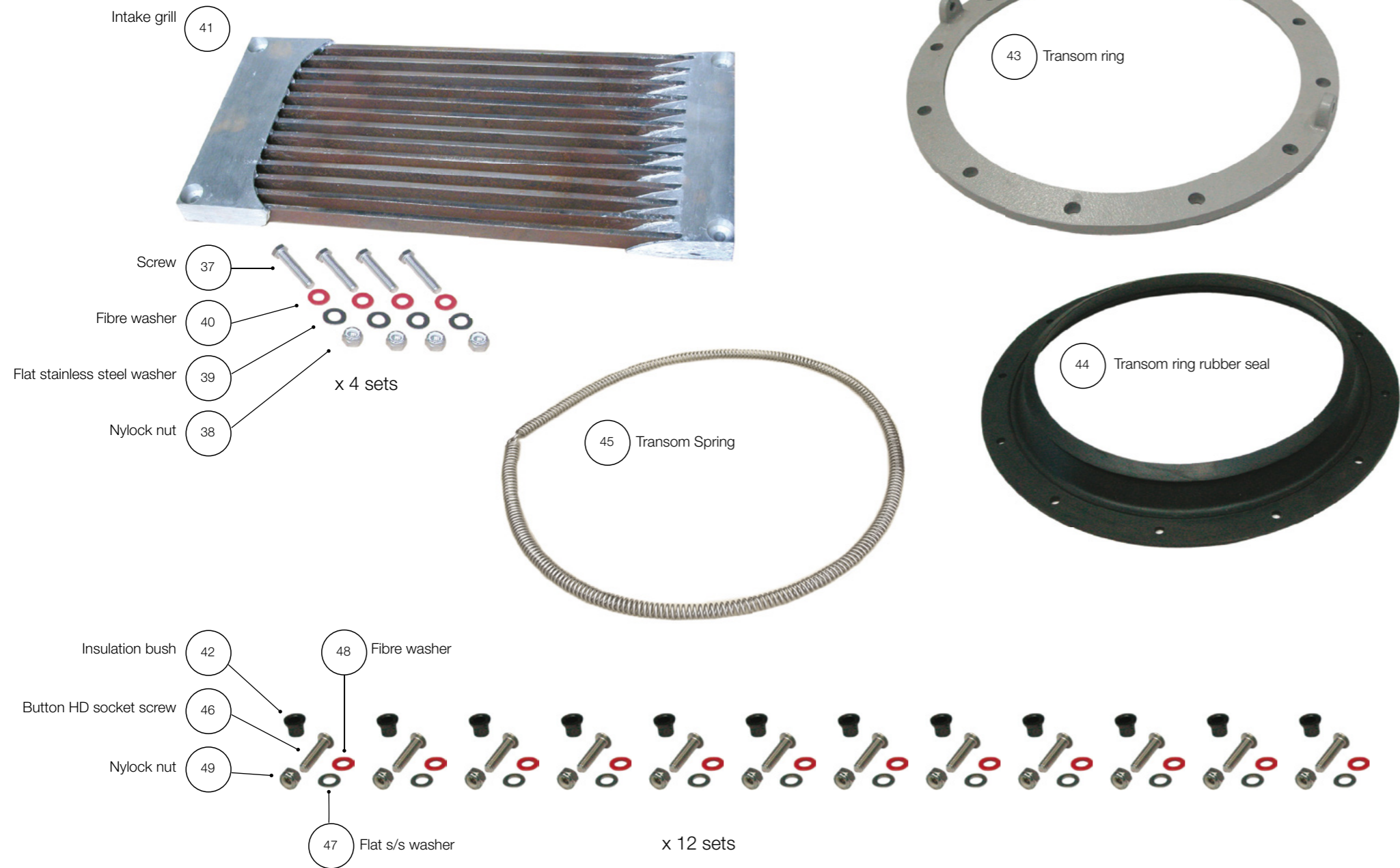


Item No 18 Mk1 Complete Steering Nozzle Mk1
Part No. 1018Mk1



Item No 18 Mk2 Complete Steering Nozzle Mk2
Part No. 1018Mk2

Flo/Pro Marine Freshwater Jet Pumps – Parts List Grill, Transom Ring, Rubber Seal and Spring



PARTS PRICE LIST

**Flo Pro Marine Freshwater Waterjets
Grille, Transom Seal Assembly**

Item	Description	Part #	Qty		unit
			2 stage	3stage	
37	Hex Set Screw Bolts 3/8 x 2 1/4 UNC (316)	1037	4	4 each	
38	Nyloc Nuts 3/8 UNC (316)	1038	4	4 each	
39	Flat Washers 3/8 x 3/4 18g (316)	1039	4	4 each	
40	Fibre Washers 3/8 x 1/16	1040	4	4 each	
41	Intake Grille (13 bar, Bisalloy)	1041	1	1	
42	Insulation Bush	1042	12	12 each	
43	Transom Ring	1043	1	1	
44	Transom Ring Rubber Seal	1044	1	1	
45	Transom Seal Spring	1045	1	1	
46	Button Head Socket Screws 5/16 UNC (316)	1046	12	12 each	
47	Flat Washer 5/16 x 5/8 x 16g (316)	1047	12	12 each	
48	Fibre Washer 5/16 x 5/8 x 1/16	1048	12	12 each	
49	Nyloc Nut 5/16 UNC (316)	1049	12	12 each	